



IκB-β (phospho Thr19) Polyclonal Antibody

Catalog No	YP-Ab-01292
Isotype	IgG
Reactivity	Human;Rat;Mouse;
Applications	WB;IHC;IF;ELISA
Gene Name	NFKBIB
Protein Name	NF-kappa-B inhibitor beta
Immunogen	The antiserum was produced against synthesized peptide derived from human IκappaB-beta around the phosphorylation site of Thr19. AA range:4-53
Specificity	Phospho-IκB-β (T19) Polyclonal Antibody detects endogenous levels of IκB-β protein only when phosphorylated at T19.
Formulation	Liquid in PBS containing 50% glycerol, 0.5% BSA and 0.02% sodium azide.
Source	Polyclonal, Rabbit,IgG
Purification	The antibody was affinity-purified from rabbit antiserum by affinity-chromatography using epitope-specific immunogen.
Dilution	WB: 1/500 - 1/2000. IHC: 1/100 - 1/300. ELISA: 1/5000.. IF 1:50-200
Concentration	1 mg/ml
Purity	≥90%
Storage Stability	-20°C/1 year
Synonyms	NFKBIB; IKBB; TRIP9; NF-kappa-B inhibitor beta; NF-kappa-BIB; I-kappa-B-beta; IκB-B; IκB-beta; IκappaBbeta; Thyroid receptor-interacting protein 9; TR-interacting protein 9; TRIP-9
Observed Band	37kD
Cell Pathway	Cytoplasm . Nucleus .
Tissue Specificity	Expressed in all tissues examined.
Function	function:Inhibits NF-kappa-B by complexing with and trapping it in the cytoplasm. However, the unphosphorylated form resynthesized after cell stimulation is able to bind NF-kappa-B allowing its transport to the nucleus and protecting it to further IKBA-dependent inactivation. Association with inhibitor kappa B-interacting NKIRAS1 and NKIRAS2 prevent its phosphorylation rendering it more resistant to degradation, explaining its slower degradation.,PTM:Phosphorylated; followed by degradation. Interaction with NKIRAS1 and NKIRAS2 probably prevents phosphorylation.,similarity:Belongs to the NF-kappa-B inhibitor family.,similarity:Contains 6 ANK repeats.,subunit:Interacts with THRB (via ligand-binding domain). Interacts with RELA and REL. Interacts with COMMD1 and inhibitor kappa B-interacting Ras-like NKIRAS1 and NKIRAS2.,tissue specificity:Expressed in all tissues examined.,



Background

The protein encoded by this gene belongs to the NF-kappa-B inhibitor family, which inhibit NF-kappa-B by complexing with, and trapping it in the cytoplasm. Phosphorylation of serine residues on these proteins by kinases marks them for destruction via the ubiquitination pathway, thereby allowing activation of the NF-kappa-B, which translocates to the nucleus to function as a transcription factor. Alternatively spliced transcript variants have been found for this gene.[provided by RefSeq, Jul 2011],

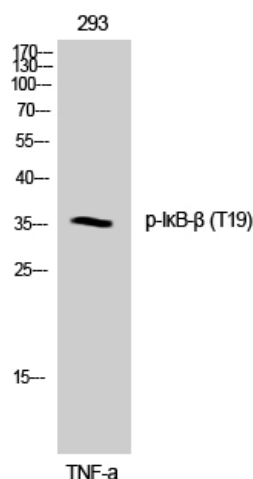
matters needing attention

Avoid repeated freezing and thawing!

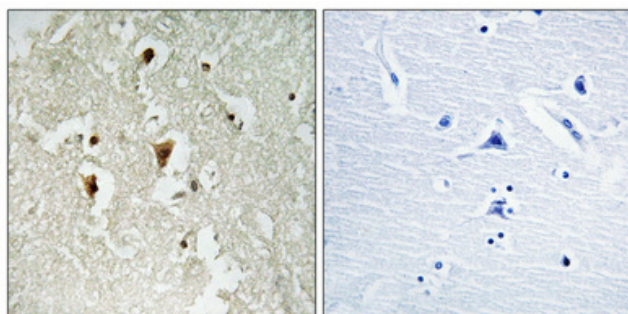
Usage suggestions

This product can be used in immunological reaction related experiments. For more information, please consult technical personnel.

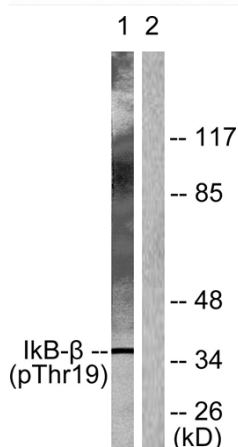
Products Images



Western Blot analysis of 293 cells using Phospho-IkB-β (T19) Polyclonal Antibody



Immunohistochemical analysis of paraffin-embedded Human brain. Antibody was diluted at 1:100 (4° overnight). High-pressure and temperature Tris-EDTA, pH 8.0 was used for antigen retrieval. Negative control (right) obtained from antibody was pre-absorbed by immunogen peptide.



Western blot analysis of lysates from 293 cells treated with TNF-α 20ng/ml 30', using IkappaB-beta (Phospho-Thr19) Antibody. The lane on the right is blocked with the phosphopeptide.